

THE LINDSAY ADVANTAGE



A COMPLETE SOLUTION FROM PLAN TO PROFIT

THE LINDSAY ADVANTAGE

DURABLE
RUGGED
EASY TO USE
INTEGRATED
TECHNOLOGIES
BROADEST LINE
OF SOLUTIONS

Zimmatic® by Lindsay offers proven systems and products that are built to be strong, long lasting, durable and easy to use for growers who need highly efficient irrigation solutions. These systems can be enhanced with a family of integrated plug-and-play add-ons.

Growers around the world rely on Zimmatic's innovative technology supported by a network of knowledgeable dealers to add value, reduce risk and take full advantage of every growing season.

From pumping systems to sensors, advanced controls to GPS positioning, there's a product for every grower and every field.

With so many choices and options, Zimmatic can customize a unique system that maximizes time, labor and water savings for your individual needs.

You can mix and match components to build your own unique system.



Wide range of pivots and laterals

Rugged, high-performing Zimmatic irrigation systems have provided proven results for decades.



Advanced controls

User-friendly control panels offer timesaving management and precise control.

Precision plug & play add-ons

Measure, report and manage with a variety of Growsmart® advanced products including variable rate irrigation, GPS positioning, and sensors.



Wireless management

With FieldNET®, you can monitor and control pivots, laterals, end guns, and pumps. Stay informed with text message alerts.



Custom pumping solutions

Innovative systems from Watertronics® are custom built for optimum efficiency and durability to maximize water savings.

IRRIGATION DESIGN
ADVANCED CONTROLS
CUSTOM CORNER WATER PATTERN
COMPLETE RANGE OF PIVOTS
ENGINEERED SPRINKLER PACKAGES
GPS POSITIONING & GUIDANCE
CUSTOM PUMPING SOLUTIONS
VARIABLE RATE IRRIGATION
WIRELESS IRRIGATION MANAGEMENT
SMARTPHONE APPLICATION
PLUG & PLAY ADD-ONS



PIVOTS AND LATERALS

A leader in innovation for more than 50 years, Zimmatic gives growers high-performing irrigation systems. These systems have provided proven results in varying terrain, cropping situations and irrigation requirements – season after season.

Designed for life on the farm, these systems are constructed with the highest quality components and engineered to apply precisely the right amount of water and chemicals at the right time, so you can get more from your crops.

Zimmatic allows you to choose your pivot point or lateral cart options, spans, tower structure and driveline for a machine custom designed just for your field.



9500P – Designed for the toughest environments and terrain. The most rugged member of the Zimmatic family is built with the industry's thickest pipeline.



8500P – An incredible value featuring structural strength and long-lasting reliability. The 8500 matches the competition's thickest pipeline.



7500P – Cost-effectively irrigates fields up to 60 acres, featuring a full 10.5 ft crop clearance. An ideal small field irrigator.



9500L – Hose-fed and ditch-fed laterals can bring up to 98% more of your crop into full production with a choice of water supply and guidance systems.

EXCLUSIVE COMPONENTS



Driveline

Field-proven for more than a quarter-century. Designed for

superior durability, efficiency and speed.



Tower and Uni-Knuckle with split coupler

Built to last in a variety of

tower heights. The exclusive Uni-Knuckle ensures a solid, watertight connection.



Pipe options

Zimmatic's standard 11-gauge pipe is the thickest on the market and features

formed (not welded) outlets. Poly-lined, galvanized steel, stainless steel and aluminum options.



Pivot point with collector ring

Hot-dipped galvanized steel legs and

heavy-duty cross-members form a rugged foundation. Exclusive collector ring is mounted externally, eliminating water flow restriction.



NEW! NFTrax

This no-flat wheel assembly keeps ruts to a minimum. The unique design controls water runoff and increases tracking. It won't puncture and there's no air pressure to check – saving time, labor, and replacement costs.



GREENFIELD™

BY LINDSAY

ENGINEERED FOR SMALL FIELDS

The 600P and 800P pivots are designed to fit fields up to 70 acres (30 ha) with lower crop clearance. Typical applications include sod/turf farms, livestock pasture, alfalfa, vegetables, hunting land, and horse farms.

Simple to set up and move, these pivots provide extremely accurate water distribution at low pressure.

None of the components exceed 20 ft. (6.1m) in length, ensuring easy handling, setup and transport. Towable models convert easily from fixed to tow mode for quick movement from field to field.

4-Wheel Lateral Cart

Crab steering for accurate alignment with 330 ft (100.6 m) poly hand hose and a 4.5 inch O.D. (114.3 mm).



Accurate and efficient water distribution

Unlike flood irrigation, a center pivot machine delivers precisely the amount of water you need, where you need it.

Minimal wheel tracks

Exceptionally strong but lightweight structure is supported on extra wide 26-inch (66 cm) flotation tires for reduced ground compaction.





ZIMMATIC™
BY LINDSAY

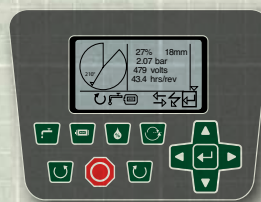
IRRIGATION CONTROL

Save time, money and water with an easy-to-use irrigation control panel featuring Zimmatic technology. You can use our controllers in any field conditions – whether you have uneven terrain, varying soil types or are growing multiple crops.



BASIC

Simple, dependable and economical, the BASIC features automatic shutdown, reverse and power restart.



VISION for pivots

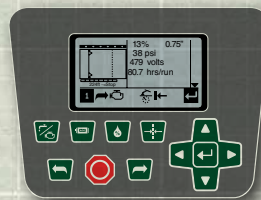
User-friendly and Internet-ready, this pivot control panel provides vital status information in one glance.



BOSS

This smart, intuitive and expandable control panel provides powerful irrigation management.

EZ Plans provide automatic control of water application for multiple segments.



VISION for laterals

Designed to simplify lateral control, it's 15 times faster to program than other lateral panels.





iPad

FIELDNET
BY LINDSAY

HOME

MAP

EQUIPMENT

ALERTS

REPORTS

SETTINGS

ADMIN

10:43 PM

July 28, 2013
10:43 PM CST

Fred Arnold

Google

PIVOT 1

BOSS 8.01 (v8.01)

Forward Wet

Manual Mode

Map data ©2013 Google Imagery ©2013, DigitalGlobe, GeoEye, USDA Farm Service Agency

38.0%

0.64 in

35 psi

800gpm

None

Apply

Reset



WIRELESS MANAGEMENT

Stay informed and make adjustments on the fly with next-generation FieldNET by Lindsay. Providing the most comprehensive options to remotely control entire irrigation systems – from pivots and laterals to pumps and sensors – FieldNET includes the only wireless management tool with an app on both major smartphone and tablet platforms. That means growers can see what their systems are doing and control them from virtually anywhere using a laptop, tablet or smartphone.

Fast and user-friendly, FieldNET provides an integrated water, fertilizer and chemigation solution with remote control of pivots, laterals, end guns, injectors and pumps, and the ability to monitor and record everything from water and energy usage to rainfall and temperature.

It all adds up to less time in the field, less spent on valuable resources, and greater control of your operations.



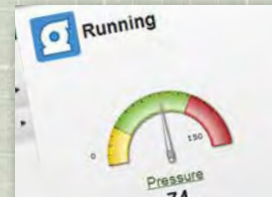
FieldNET Wireless Irrigation Management

Monitor and control pivots, laterals, end guns, and sensors. Stay informed with text message alerts.



FieldNET PRO with GPS

Wireless irrigation controller for existing pivots with mechanical panels. Retrofit almost any brand of pivot for added intelligence with GPS position, control and ease of use.

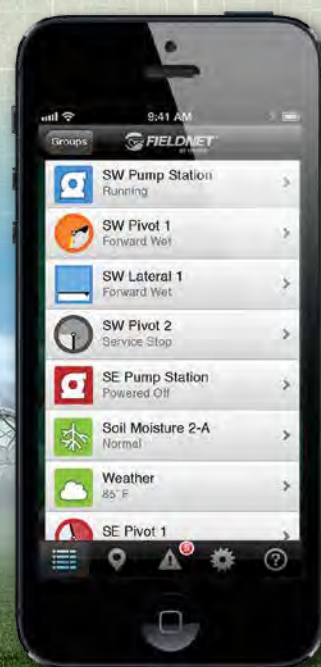
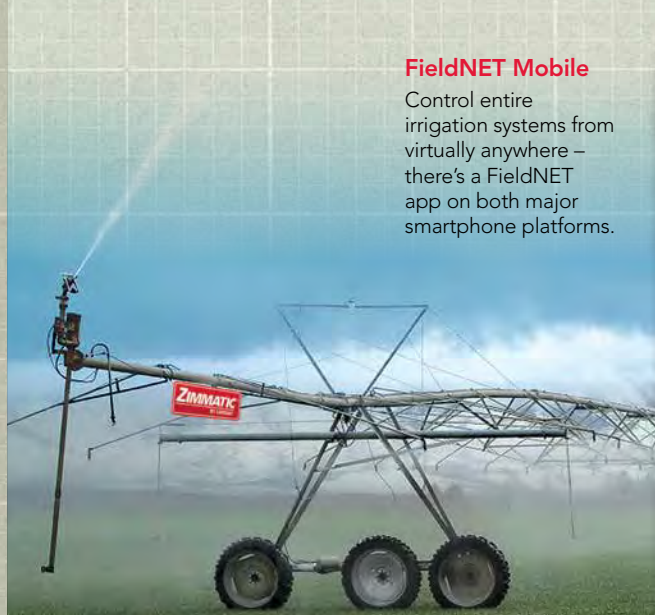


Pump Control

One integrated control system adjusts pumps to meet demand. Save up to 75% of the time and fuel it takes to manually check pumps.

FieldNET Mobile

Control entire irrigation systems from virtually anywhere – there's a FieldNET app on both major smartphone platforms.





Innovative Growsmart by Lindsay products help utilize best management practices that offer convenience and lower operating costs through the efficient use of time, labor, energy and water.

Measure, report and manage with a wide range of advanced products, including precision plug-and-play add-ons.

Weather Station

Weatherproof unit features sensors for wind speed and direction, solar radiation, air temperature, precipitation, and more.



Wireless Pump Control

Starts and stops pumps automatically without trips to the field – saving time, water and fuel.



Chemigation/fertigation

Growsmart's chemical injectors provide simple operation, precision application and built-to-last durability.

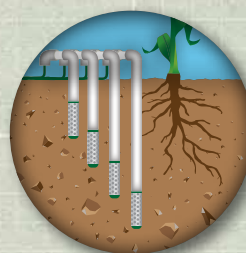
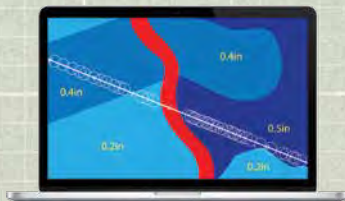


PLUG & PLAY ADD-ONS



Precision VRI Custom Application Tool

The custom application tool allows you to define an infinite number of flexible areas, and with Precision VRI, there's no restriction on size or shape.



Soil Moisture Monitor

Moisture probes minimize water stress, maximize yields and reduce operation costs.



GPS Position System

Uses the power of global positioning to identify the exact location of the end gun in relation to the pivot point.



Precision VRI

Applies exactly the right amount of water/
chemicals to each square inch of the
field – maximizing yields and profitability.
Define by zone or individual sprinkler.





CUSTOM PUMP SOLUTIONS

A pumping system shouldn't fit every farm – it should fit your farm. That's why Watertronics, a Lindsay company, will customize a system to deliver precisely what your crops need – designed to match your existing irrigation system, and to meet local utilities specifications.

A Watertronics pump station combined with Variable Frequency Drive offers surge-free pressure regulation that can save up to 25% on energy. Your custom system will be pre-engineered, tested at the factory, and delivered to you, ready for easy installation.

The convenient, user-friendly controls and add-ons will enhance the effectiveness of the system, the success of your operation, and the return on your investment.



Fully customizable and automated

Engineers customize and test systems to deliver precisely what each grower's crops require. Practically fail-safe – these systems don't need constant monitoring – alarms will detect if anything needs attention.



Horizontal and vertical pumps

From a simple single pump to multiple pumps, these user-friendly systems are custom built for optimum efficiency and durability, and maximize water savings.



Electronic Butterfly Valve (EBV)

Patented EBV complements VFD controls by pressure regulating each pump and provides 100% backup pressure regulation in the event of a VFD fault.



FieldNET Pump Control and Dynamic Demand Control

Integrated, Web-based control system that allows pumps to be operated at the most energy-efficient setpoint and then automatically sequence to meet demand.

Variable Frequency Drive (VFD)

VFD control technology adjusts the speed of the electronic motor on Watertronics pumping systems in order to

match the operation's specific energy needs. Works with new or existing pumps.

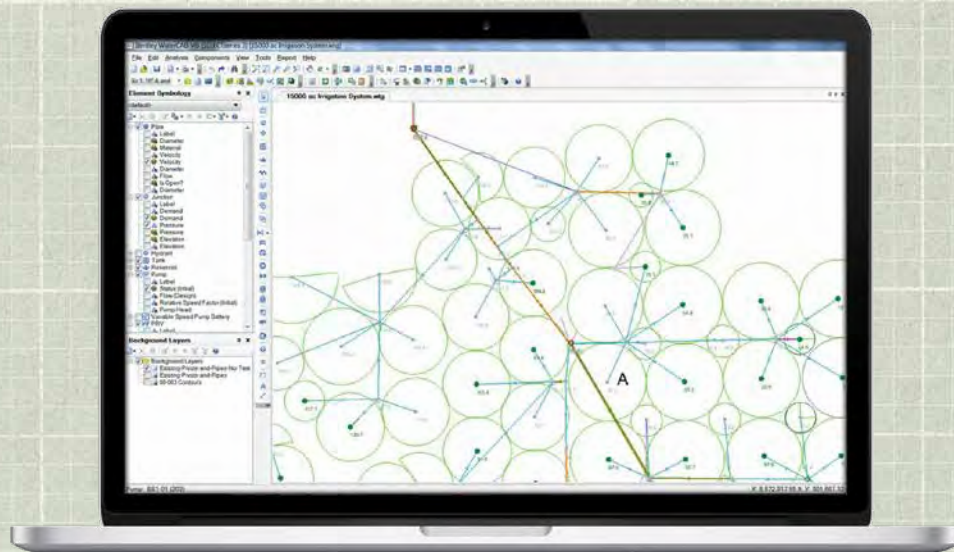




IRRIGATION ENGINEERING, DESIGN & MANAGEMENT

IRZ Consulting

A Lindsay irrigation engineering and design firm, IRZ engineers design modern turnkey and efficient irrigation systems for growers with farms 1,000 to 100,000 acres (500 to 50,000 ha), which increases energy efficiency while reducing water, fertilizer/chemical, labor and costs.



Services include:

- Irrigation engineering design
- Feasibility study/ Master Plan
- Pump station, pipeline and booster design
- Systems optimization
- Water and energy Conservation Plan
- Water resources development
 - Groundwater, wells, groundwater recharge
 - Reservoirs
 - Canals
- Soil moisture monitoring
- Energy usage monitoring



IRZ Consulting specializes in water resources development to optimize irrigation efficiency.



WIRELESS BROADBAND SOLUTIONS FOR AGRICULTURE

ezWireless is a full-service wireless networking and broadband systems integrator.

Our broadband communications solutions for pivots, pumps and sensors deliver ultra fast, always-on connectivity that enables real-time monitoring and control on one, standards-based platform.

Services include:

- Communications systems consulting and design
- Turnkey, private broadband networks
- Zimmatic pivot and Watertronics pump system telemetry
- Access to FieldNET in areas lacking cell coverage
- Access to internet and mobile office applications in vehicle anywhere on the farm
- Remote video surveillance of assets
- Storage and facility telemetry
- Standards-based, non-proprietary system to support

ZIMMATIC™

BY LINDSAY



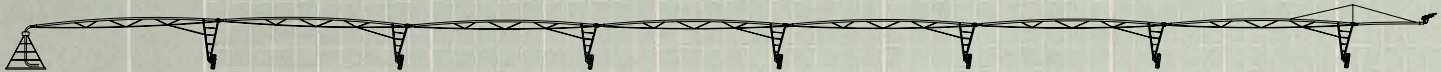
GREENFIELD

BY LINDSAY

SELECT YOUR PIVOT POINT

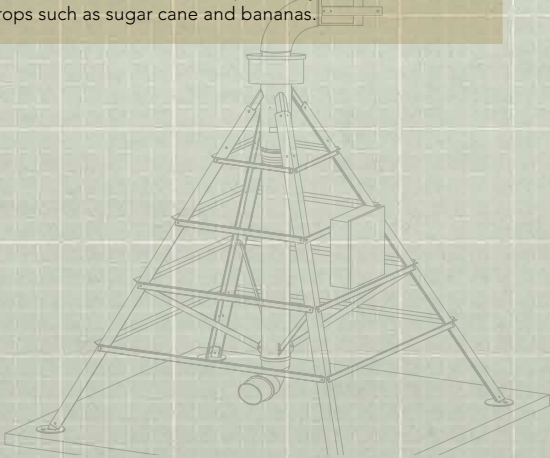
[illegible]

SELECT YOUR SPAN CONFIGURATION & TOWER STRUCTURE

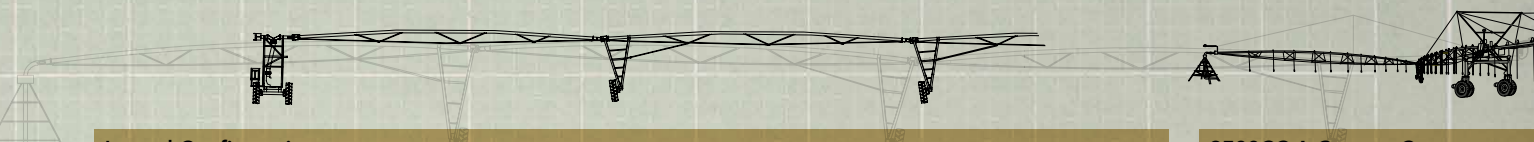


Span Configuration				
	9500 Series	8500 Series	7500 Series	Greenfield
Diameters	10", 8-5/8", 8", 6-5/8", 5-9/16"	6-5/8"	4-1/2"	4"
Pipeline Thickness	11 Gauge	12 Gauge	11 Gauge	11 Gauge
Pipeline Material	Galvanized Stainless Aluminum Poly Lined	Galvanized	Galvanized	Galvanized
Span Lengths	10" 113' to 135'	6-5/8" 113' to 201'	4-1/2" 120' to 198'	80' to 120'
	8-5/8" 113' to 180'			
	8" 113' to 180'			
	6-5/8" 135' to 201'			
	5-9/16" 135' to 201'			
Overhang Lengths	11' to 88'	11' to 88'	19'6" to 78'	10' to 20'
Span Compatibility	9500 & 8500 Series	9500 & 8500 Series	7500 Series Only	Greenfield Only
Outlet Design	Formed/Tapped	Formed/Tapped	Formed/Tapped	Welded
Span Connection	Split Coupler/Boot	Split Coupler/Boot	Hose/Clamp	Hose/Clamp
Joint	Zimmatic Uni-Knuckle	Zimmatic Uni-Knuckle	Zimmatic Uni-Knuckle	Zimmatic Uni-Knuckle
Truss Rods	¾", 11/16"	11/16"	11/16"	N/A
Max Slope	30%	30%	15%	15%
Truss Angle	2"x 2"x 3/16" and 1/8"	2"x 2"x 1/8"	2"x 2"x 1/8"	1"x 1"x 1/8"

Tower Structure				
	9500 Series	8500 Series	7500 Series	Greenfield
Clearance Options	Low, Standard, Medium, High, Ultra-High	Standard, Medium	Standard	600 Series or 800 Series
Height	5', 10', 12', 20', 25'	10', 12'	10'6"	6', 8'
Configuration	2 or 3 Wheel	2 or 3 Wheel	2 Wheel	2 Wheel
Tower Legs	4" x 3" x 1/4"	4" x 3" x 1/4"	3-1/2" x 3-1/2" x 1/4"	2" x 2" x 1/8"
Stabilizers	Crossed 3" Angle Iron	Crossed 3" Angle Iron	Crossed 2" Angle Iron	1" x 1" x 18"
Tire Options	11.2" x 22.5"	11.2" x 22.5"	11.2" x 22.5"	12.5" x 15"
	11.2" x 24.5"	11.2" x 24.5"	11.2" x 24.5"	16.9" x 24"
	11.2" x 24"	11.2" x 24"	11.2" x 24"	
	11.2" x 38"	11.2" x 38"	14.9" x 24"	
	14.9" x 24"	14.9" x 24"	16.9" x 24"	
	16.9" x 24" Trax	16.9" x 24" Trax		
Span Compatibility	9500 & 8500 Series	9500 & 8500 Series	7500 Series Only	7500 Series Only
Benefits	Standard, medium clearance and high clearance options feature a heavy-duty drive tube using an exclusive double-sided welded brace. Widespread legs distribute the load over a greater area. The medium clearance tower structure was designed for today's taller and stronger genetically enhanced corn hybrids. The high clearance tower structure is specifically useful with tall crops such as sugar cane and bananas.			



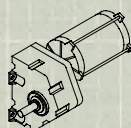
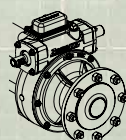
ALTERNATE CONFIGURATIONS



Lateral Configurations					
	9500L		9500PL		Greenfield
	4 wheel	2 wheel	6 wheel	4 wheel	
Clearance	Low, Standard, Medium, High, Ultra-High		Standard, Medium, High		600 Series or 800 Series
Maximum Length	None	None	1340'	1340'	680'
Ditch Fed	Yes	No	Yes	Yes	No
Hose Fed	Yes	Yes	Yes	Yes	Yes
Center Fed	Yes	No	No	No	No
End Fed	Yes	Yes	Yes	Yes	Yes
Pivoting	No	Yes	Yes	Yes	Yes
Span Diameter	5-9/16", 6-5/8", 8"	5-9/16", 6-5/8", 8"	5-9/16", 6-5/8", 8"	5-9/16", 6-5/8", 8"	4"
Span Compatability	9500	9500	9500/8500	9500/8500	Greenfield
Buried Wire Guidance	Yes	Yes	No	No	No
Above Ground Cable Guidance	Yes	Yes	No	No	No
Furrow Guidance	Yes	Yes	Yes	Yes	Yes

9500CC Custom Corner	
Clearance	Standard
Span Lengths	179' and 201'
Overhang Length	88'
Connection Joint	Solid - High Flow
Custom Water Pattern Option	Yes
4 x 4 Drive Option	Yes
GPS Guidance	Yes
Buried Wire Guidance	Yes
Full Control Panel	Yes

SELECT YOUR DRIVELINE & MACHINE OPTIONS



Driveline		Tracking	FieldPLUS	Sprinklers
Gearbox	Center Drive			
<p>AT Gearbox – Shorter output shaft eliminates high overhang load, which extends bearing life. The industry's largest expansion chamber reduces internal pressure and temperature.</p> <p>TNT 2 Towable Gearbox – Newly designed TNT 2 gearbox incorporates a gear bale that's easier to engage and disengage.</p>	<p>43 RPM – A ¾ HP motor engages a spur gear drive, producing a 9 RPM increase over the competition (43 RPM vs 34 RPM). Triple reduction spur gear provides the industry's highest efficiency. Non-helical gear design results in less heat, friction and overall wear.</p> <p>59 RPM – 1.0 HP motor reduces rotation time by 37%.</p>	<p>NFTrax An airless, puncture-free wheel assembly with greater traction and flexibility.</p> <p>Trax is ideal for difficult areas and all terrains. Superior tread eliminates ruts with no tires to change.</p> <p>Three-Wheel Tower Structure is perfect for marshy areas and problem soils.</p> <p>Corner 4x4 features four wheels that work together to provide better traction and more even weight distribution of the corner swing tower.</p>	<p>Articulated pivot brings more acres into production in irregularly shaped fields or in fields that contain immovable obstacles.</p> <p>The exclusive FieldPLUS joint can be placed on any tower, allowing the creation of system that's customized for a particular field.</p>	<p>Zimmatic dealers can customize a sprinkler package using a variety of drops, offsets, boombucks, pressure regulators and end guns.</p> <p>Rotating spray, fixed spray and LEPA sprinklers provide the needed coverage and pressure for any crop.</p>

SELECT YOUR CONTROL & REMOTE TELEMETRY OPTIONS



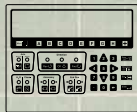
BASIC

Simple, dependable and economical, the BASIC features automatic shutdown, reverse and power restart. Provides easy to use, reliable service under the toughest conditions.



VISION

User-friendly and Internet-ready, this control panel provides vital pivot status information in one glance. Includes multi-lingual and metric capabilities, and is modular with expandable options.



BOSS

This smart, intuitive and expandable control panel allows you to manage irrigation systems from a computer, phone or radio. EZ Plan feature provides fast access to commonly used scheduling options.



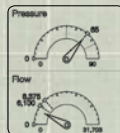
FieldNET

Remotely monitor and control entire irrigation systems – from pivots and laterals to pumps and sensors – from a laptop, tablet or smartphone. Next-generation technology provides integrated water, fertilizer and chemigation management.



FieldNET PRO w/GPS

Web-based irrigation controller for existing pivots with mechanical panels. Retrofit for added intelligence, control and ease of use. GPS precision control of end gun areas, programmable pivot shutdowns, and water rate adjustment areas for improved efficiency.



FieldNET Pump Control

One integrated control system adjusts pumps to meet demand. Save up to 75% of the time and fuel it takes to manually check pumps. Measurement and monitoring tools provide critical usage and performance information for continuous improvement. Dynamic Demand Control allows pivots to be grouped with pump stations for powerful information sharing to reduce energy costs.

SELECT YOUR PLUG & PLAY ADD-ONS



GPS Position System

Uses the power of global positioning to identify the exact position of the end gun in relation to the pivot point. Allows control of water and fertilizer application through end guns or an entire bank of sprinklers.



Chemigation/Fertigation

Three options to match system and application needs. Built-in safety features for reliable and accurate performance. Integrates with Growsmart control systems for simple monitoring and management.



Weather Station

Weatherproof unit features sensors for wind speed and direction, solar radiation, air temperature, precipitation and more.



Soil Moisture Sensors

Moisture probes minimize water stress, maximize yields and reduce operation costs.



To find out how The Lindsay Advantage can work for you,
visit www.lindsayadvantage.com or talk to your local dealer.



THE LINDSAY ADVANTAGE

DURABLE • RUGGED • EASY TO USE • INTEGRATED TECHNOLOGIES •
BROADEST LINE OF SOLUTIONS



2222 N. 111th St., Omaha, NE 68164 • 1-800-829-5300 • 1-402-829-6800 • www.lindsay.com



Lean, Clean and Green. Lindsay Corporation is committed to developing environmental awareness and implementing sustainable practices to reduce the use of and protect energy, water, and all other resources.



© 2013 Lindsay. All rights reserved. Zimmatic, FieldNET, Growsmart, Greenfield and Watertronics are trademarks or registered trademarks of the Lindsay Corporation. All brand names are trademarks or registered trademarks of their respective companies.